



MADE IN THE USA

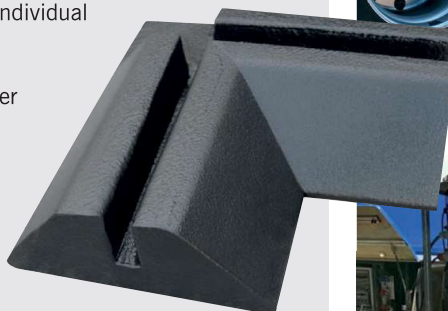
# Gorilla Containment Bund

## APPLICATION

- Provides long term spill containment for machinery, IBC's and tanks with combined vehicle access

## FEATURES & BENEFITS

- Modular construction allows for a containment area of any size to be constructed to suit customers individual requirements
- Polymer-coated foam support blocks provide structure to sidewalls which can be driven over repeatedly without damage
- Moulded-in chanel in top of the foam blocks hold 25mm diameter rebar (not included) to secure the liner
- System is not secured to the substrate and can be easily dismantled and removed after use for future projects
- Conforms to EA LFE 5 and CIRIA C736: Design of Containment Systems For The Prevention Of Water Pollution From Industrial Accidents



Bund Dimensions L x W m	No. Of Wall Sections Required	No. Of Corners Required	Sq.m Of Liner Required	Containment Capacity Litres	Weight kgs
2.1 x 4.0	6	4	38	1385	74.5
4.0 x 4.0	8	4	52	2517	100
4.0 x 7.6	12	4	72	4781	150.5
4.0 x 9.4	14	4	82	5917	176
4.0 x 13.1	18	4	113	8180	222.5
4.0 x 16.8	22	4	133	10444	278
4.0 x 18.6	24	4	144	11580	302
7.6 x 16.8	26	4	206	19847	393.5
9.4 x 16.8	28	4	238	24548	455.5
16.8 x 16.8	36	4	387	43351	681.5



Code	Description	Dimensions L x W x Hmm	Weight kgs
------	-------------	------------------------	------------

### ULTRATECH GORILLA BUND COMPONENTS

UL-34-300	Wall section	1829 x 406 x 152	8.6
UL-34-301	Corner block	610 x 610 x 152	4.1
FL-34-209	Liner	Liner per sq.m	

